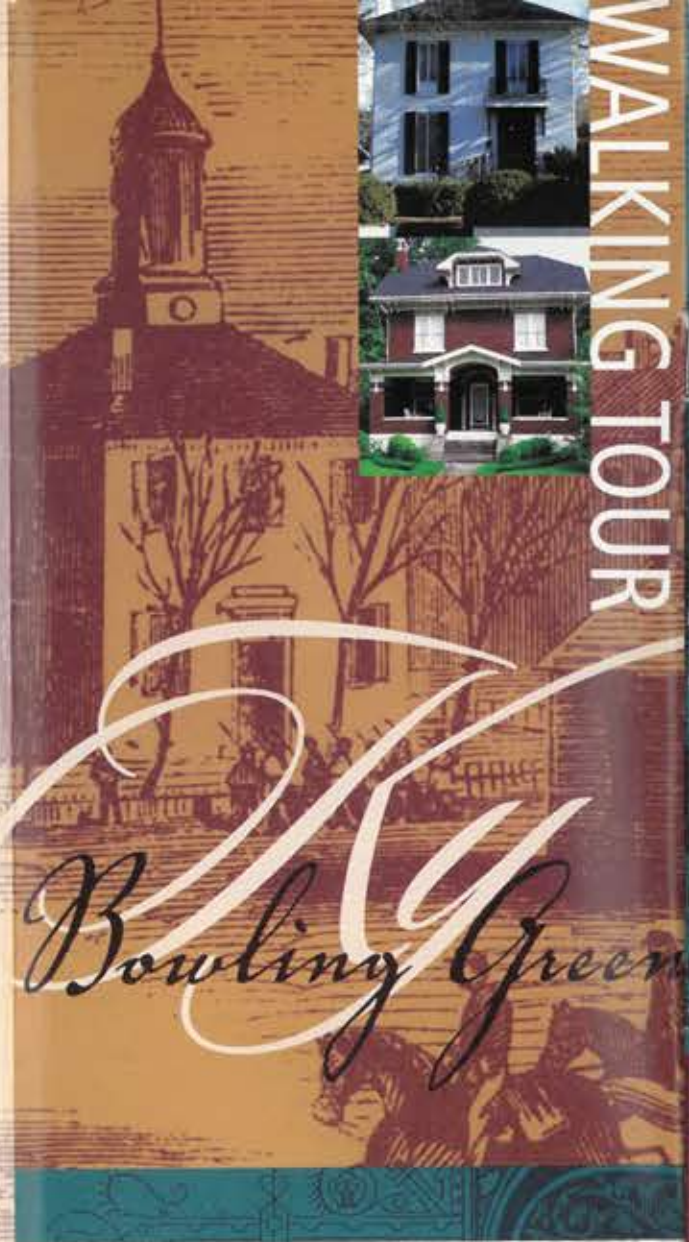


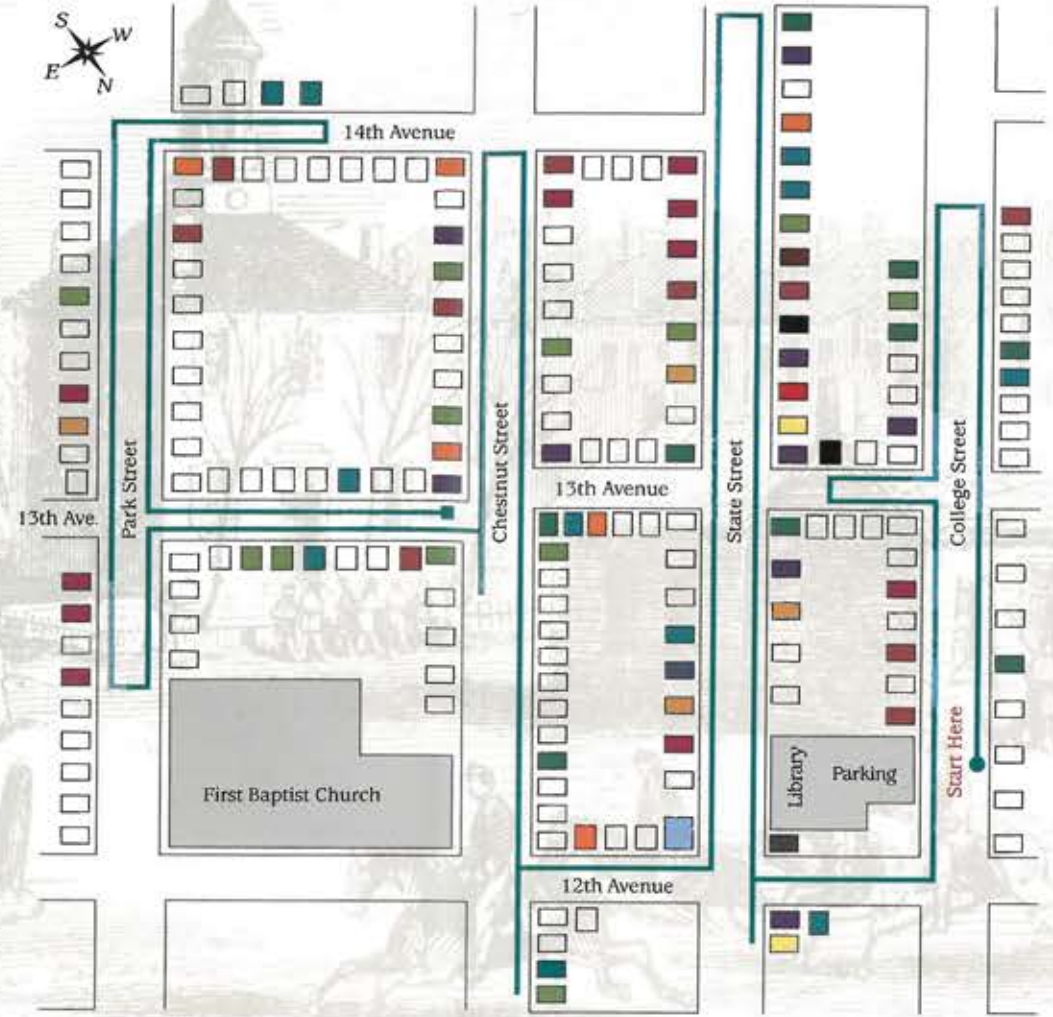


The College Hill Neighborhood and Historic District is a highly concentrated group of nineteenth and early-twentieth century residences and churches of architectural and historical significance. Styles, forms, and construction methods are mixed freely throughout the district. The majority of structures were built in Queen Anne, Greek Revival, Italianate or Eclectic styles between 1840 and 1930.

The spine of this residential district is State Street, a principal north-south street that connects the Downtown Historic District with the campus of Western Kentucky University on College Hill. The neighborhood also includes Chestnut, College, and Park Streets that parallel State Street. Starting in the 1880s, the presence of three colleges on the summit of the hill – Ogden College, Potter College and now Western Kentucky University – stimulated the growth of this residential section between the hill and the city's historic core. In addition to housing members of the academic community, the College Hill area has served as home to bank presidents, a minister to Peru, judges, authors, and all manners of the professional sector. Today, this is the largest historic residential neighborhood in the city that maintains its original integrity and character.



WALKING TOUR MAP



Bowling Green

STREET REFERENCE

College St.	PAGES 2-4
State St.	PAGES 4-13
E. 12th Ave.	PAGE 4, 13
E. 13th Ave.	PAGES 3, 14, 15, 19, 21
E. 14th Ave.	PAGE 21
Chestnut St.	PAGES 13-18
Park St.	PAGES 20-21

Published by the College Hill Neighborhood Association with funding provided by the City of Bowling Green Select Neighborhood Action Program.

Special thanks to Kelley Coppinger, Maggie Hilliard, Andrew Miladin, and Michael Reuter for design and layout.

REVISED MAY 2005

ARCHITECTURAL REFERENCE

- American Foursquare
- Colonial Revival
- Craftsman/Bungalow
- Eclectic
- Federal
- Folk Victorian
- Gothic Revival
- Greek Revival
- Italianate
- Mission
- Queen Anne
- Romanesque
- Roman Revival
- Second Empire
- Tudor/English Cottage

WELCOME TO COLLEGE HILL

Begin the tour at the Bowling Green Public Library (Main Branch) parking lot located at 1225 State Street. Starting on College Street, the walking route follows the main streets of College, State, Chestnut and Park first towards the hill and then back with occasional detours onto 12th, 13th, and 14th Avenues. The route ends at the corner of 13th Avenue and Chestnut Street only two short blocks to the library. We hope you enjoy your tour!

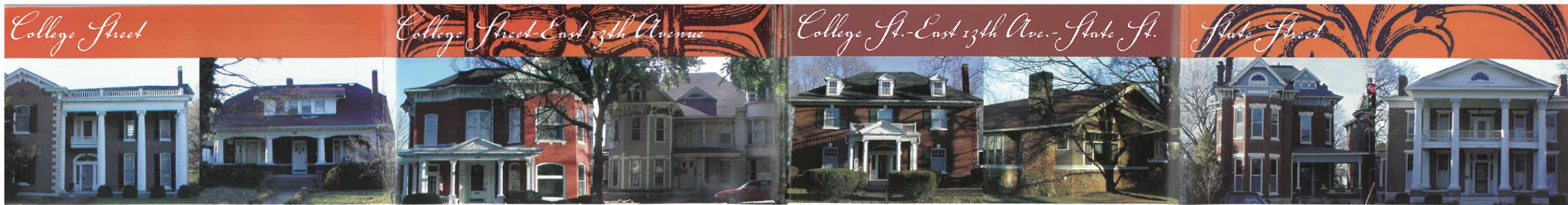
SOURCES

Deed records at the Warren County Courthouse. Property records at the Warren County Property Valuation Administration. Manuscript collection at the Kentucky Library, Western Kentucky University. *Our Heritage: An Album of Early Bowling Green Kentucky Landmarks*, by Irene Moss Sumpter. *Architecture of Warren County, Kentucky, 1790-1940*, by Landmark Association.

VISIT US ON THE WEB AT WWW.CHNABG.ORG




College Hill
 HISTORIC NEIGHBORHOOD
www.chnabg.org



1223

1325

1338

1310

1224

416

1153

1253

1223 COLLEGE STREET

W. H. EVERHARDT HOUSE

CIRCA 1879 Italianate

This T-plan house is an excellent example of the Italianate style with its arched windows, limestone quoins, and bracketed eaves. The Greek Revival porch is a later addition.

1325 COLLEGE STREET

1925 Bungalow

Deep eaves with exposed rafters and brackets support the eaves on the gable ends. The Greek Revival detailing in the porch columns may be the result of a later remodeling. Property was owned by Robert Rodes and deeded to Marshall and Florence Reed in 1926.

1327 COLLEGE STREET

RABOLD-RODES HOUSE

1890 Italianate

This building may have been a two-story brick Italianate single-family dwelling when it was built, as evidenced by the arched windows and brick on the sides of the structure. The property was purchased from Adam Rabold by Robert Rodes Sr. The stone façade and subdivision into apartments was perhaps the result of a later remodel.

1351 COLLEGE STREET

WILLIAM V. GARVIN HOUSE

1905 Colonial Revival

This house features grouped porch columns and pediment molding above doors. William Garvin was a bookseller.

1340 COLLEGE STREET

ELLA POTTER KIRTLEY HOUSE

CIRCA 1870 Italianate

Originally located at 1349 State Street, this home was moved in 1914 to its present location. It was constructed in the late 1870s with Italianate features including rounded windows.

1338 COLLEGE STREET

JAMES MCKENZIE HOUSE

1890 Eclectic

Arched windows and bracketed eaves are Italianate, while the beveled corners with overhanging brackets are Queen Anne. The Greek Revival porch with composite columns is probably a later addition. McKenzie served as Ambassador to Peru under Grover Cleveland.

1328 COLLEGE STREET

DIAL-WELCH HOME

CIRCA 1890 Italianate

This house was built by Frank and Anna Dial for themselves and their daughter Lalla, who in 1884 married Harry Welch, an operator of a candy and ice cream store on State Street. Italianate features include brackets in eaves and distinctive window surrounds. Front porch is a later addition.

1310 COLLEGE STREET

POTTER "CASTLE"

CIRCA 1876 Queen Anne

This house was built around 1876 by James Eurasmus Potter who lost the house circa 1910 due to the collapse of his local bank. The original structure had two sleeping porches and a detached summer kitchen. No plumbing was installed in the original structure. The outstanding three-story turret was added after completion of the main structure. Until recently, the house was subdivided into twelve apartments and has been returned to a single-family dwelling.

423 EAST 13TH AVENUE

ELIZABETH WOODS HOUSE

1927 English Cottage

This house features a burr rock façade and a roof originally intended to resemble a thatched roof. Miss Elizabeth Woods, a professor of French at Western Kentucky University, received the deed to the property on which this house sits in 1920.

College St.-East 13th Ave.-State St.

1242 COLLEGE STREET

1906 Folk Victorian

Notice the cross gable plan with wrap-around porch and fishscale shingles in gable. The diagonally oriented gable at the corner is an unusual elaboration.

1240 COLLEGE STREET

1906 Colonial Revival

The flared eaves and gambrel roof are hallmarks of the Dutch Colonial Revival style. The brick porch supports with stylized insets show the influence of early 20th century architecture.

1224 COLLEGE STREET

MCGINNIS-MOSS HOUSE

CIRCA 1925 Colonial Revival

This brick home exhibits a number of colonial revival features including: keystones over windows, corner brick quoins, towering chimneys, porte cochere, hipped roof and dormers. The pedimented porch with second story balustrade was added later. The home was built by W.Y. McGinnis, a Bowling Green automobile dealer. The house was later owned by physician R. Carlisle Moss.

416 EAST 12TH AVENUE

BARTLETT WALTON HOUSE

CIRCA 1920 Bungalow

This house features knee brackets in deep overhanging eaves, extensive use of local burr rock in the foundation, chimneys and tapered porch piers.

1149 STATE STREET

MITCHELL FAMILY HOUSE

1890 Second Empire

This Second Empire style home was built in 1890 by T. C. and Molly Mitchell. It features a pressed steel shingle mansard roof. The second floor sleeping porch was added approximately 1911. It served as a duplex and then as the Beulah Ellis Boarding House in the 1940s.

State Street

1153 STATE STREET

MITCHELL FAMILY HOUSE

1893 Queen Anne

Dated brick confirms the construction date of this brick veneer home. Distinctive elements include the corbelled chimneys, fishscale shingles, and corner brackets. Comparing this house and the next house on the tour shows how style can differentiate two homes with nearly identical floor plans.

1215 STATE STREET

CHRIST EPISCOPAL CHURCH

1912 Gothic

Completed in 1912 of Warren County limestone, this is the third home to a congregation originally founded in 1844. The English Gothic structure includes a vaulted roof.

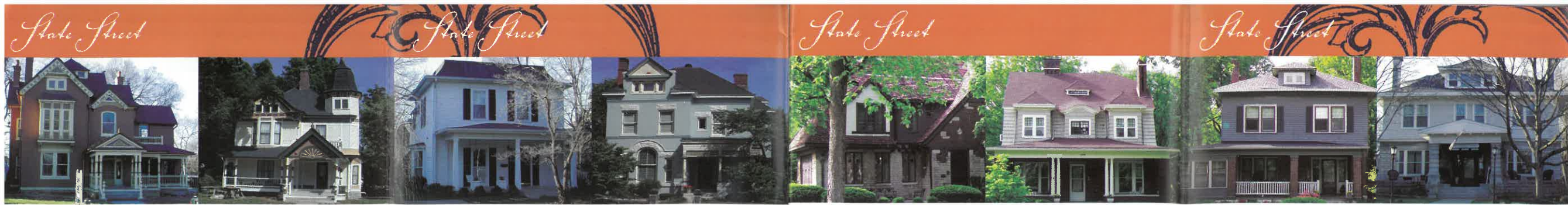
1253 STATE STREET

WILLIAM VOLTAIRE LOVING HOUSE

CIRCA 1840 Greek Revival

Built circa 1840, this house was originally set further back in the lot, closer to College Street. The original porch was far more understated, with thinner columns and no pediment over the second level. Some time between 1909 and 1914, the house was moved to its present position using jacks and logs, a process that took over two months. The Greek Revival porch featuring Corinthian columns and the side pent with Doric columns were added early in the 20th century. The Green River Female Academy occupied this home from 1869 to 1878, with teachers and students living on the upper floors and classrooms in the basement.





1261

1303

1311

1319

1333

1353

1357

1405

1261 STATE STREET **18**
TOUR

DR. E. T. BARR HOUSE

1894 Queen Anne

Construction began in 1894 and is a fine example of classic Queen Anne Victorian style. The original home was expanded in the early 1920s to include completion of the third floor and the back. The owners then retained the first floor as their private home while the upper two floors were converted into apartments.

1267 STATE STREET **19**
TOUR

J. WHIT POTTER HOME

1883 Italianate

Banker J. Whit Potter built this Italianate two-story brick home for his bride in 1883. His new mother-in-law held the deed to the property until construction was finished to insure the home would be fitting for her daughter. Nearly all of the exterior decorative detail remains today including 57 intricate brackets supporting the cornice on the second floor. The teardrop beveled and stained glass entry doors are one of many features recently restored.

1303 STATE STREET **20**
TOUR

THOMAS POLLARD-WILLIAMS HOUSE

CIRCA 1890 Queen Anne

The Pollard-Williams House was designed by nationally renowned architect George F. Barber. Designated as Design #23 in Barber's book, *The Cottage Souvenir #2*, this was one of Barber's more whimsical mail order plans that included a turret and matching love seats on the porch. It draws its architectural influences from the Queen Anne style but is a scaled down size in all aspects, therefore truly a Victorian cottage frequently called a Princess Anne.

1311 STATE STREET **21**
TOUR

POLLARD-POTTER HOUSE

CIRCA 1870 Second Empire

The most distinctive element remaining of this Second Empire style house is the mansard roof - dormer windows were removed many years ago. Second Empire style was large and boxy and rarely found in the South although some remain in areas settled prior to 1880. It was considered very modern because it imitated the latest French building style. The house was built on approximately an acre of land deeded on April 6, 1869, to Mary Reed Potter Pollard and her husband Thomas by her parents P. J. and Julia Potter for the "consideration of love and affection they entertain for their daughter..."

1319 STATE STREET **22**
TOUR

BEN NAHM HOUSE

CIRCA 1880 Richardsonian Romanesque

This Richardsonian Romanesque style house was built around 1880 for the owner of Nahm Brothers Dry Goods which was once located at 440 East Main. Note the heavy limestone lintels, decorative brickwork and Doric columns. Echoing ancient Roman architecture, the decorative vocabulary becomes lighter in each successive story.

1327 STATE STREET **23**
TOUR

JOHN B. GAINES HOUSE

CIRCA 1890 Queen Anne

Built around 1889 for newspaper publisher John B. Gaines, this Queen Anne style home, often called a Princess Anne due to its smaller scale, features a corner tower, interestingly flared roofline in the front gable, Eastlake window and door trim and decorative elements in the gables and architrave. The milled wood veneer on the façade gives the appearance of masonry construction. Mr. Gaines ran the Park City Daily Times newspaper.

1333 STATE STREET **24**
TOUR

C. W. LAMPKIN HOUSE

CIRCA 1930 Tudor

Mayor C. W. Lampkin built this lovely Tudor house around 1930 where a Second Empire brick home originally stood. Deed records from the period suggest that the previous home was known as the "Tri-State Inn." The present house designed by local architect James Maurice Ingram features leaded glass windows, massive timber lintels, and multiple materials on the facade.

1341 STATE STREET **25**
TOUR

CIRCA 1935 Colonial Revival

This Colonial Revival style four-plex apartment building was designed by James Maurice Ingram and built by Mayor C. W. Lampkin.

1349 STATE STREET **26**
TOUR

BIRDIE REED ELLIS HOUSE

1910 Mission

Built in 1910, this two-story yellow brick house was designed by Creedmore Fleenor. The Mission style pediment and porch make this house stand out among Fleenor's works in Bowling Green. Interestingly, the fenestration on the left side of the house appears to disclose parts of the interior plan of the house, a design element that later became an important part of 20th century architectural theory.

1353 STATE STREET **27**
TOUR

MRS. J. E. TYLER HOUSE

1910 Eclectic

Built in 1910, this eclectic house was designed by Creedmore Fleenor. Craftsman elements include the front porch supported by massive brick piers and the harmonious use of limestone, brick and shingles on the exterior. The gambrel roof, corbelled chimney, and arched center dormer are typical of the architecturally playful designs of Fleenor.

1357 STATE STREET **28**
TOUR

ALEXANDER DUVALL HOUSE

CIRCA 1906 American Foursquare

This was built by Alexander Duvall for himself and his second wife, Miss Elizabeth Smith. The house was designed by architect Henry McGoodwin. The Foursquare features include pyramidal hipped roof, front dormer, and a large off-center doorway. Side porch to the left has been enclosed. Mr. Duvall ran a dry good store located at Main and State.

1403 STATE STREET **29**
TOUR

STATE STREET METHODIST EPISCOPAL PARSONAGE

CIRCA 1910 Craftsman

Although the half-timbering in the front gable gives this house a Tudor feel, the exposed rafters under deep eaves, the use of tan bricks, and the broad porch featuring massive brick piers are common in the Craftsman style. This house was originally used as a parsonage for the State Street Methodist Episcopal Church.

1405 STATE STREET **30**
TOUR

MORGAN O. HUGHES HOUSE

CIRCA 1909 American Foursquare

Built around 1909 by W. F. Ennis, this 2.5-story house is American Foursquare in style with its stonework first floor, flared floor line at the second floor, leaded windows, and bracketed eaves.

1417 STATE STREET **31**
TOUR

JOHN EVANS HOUSE

1895 Queen Anne

This Queen Anne built in 1895 appears to have much of its original decorative details, including fish scale shingles in the front gables, Eastlake trim around the front door, Doric porch columns supporting an architrave with dentils, and spindlework railings. The house is believed to have been built by P. J. and Julia F. Potter, as deed records indicate they were the owners of the property at the time.



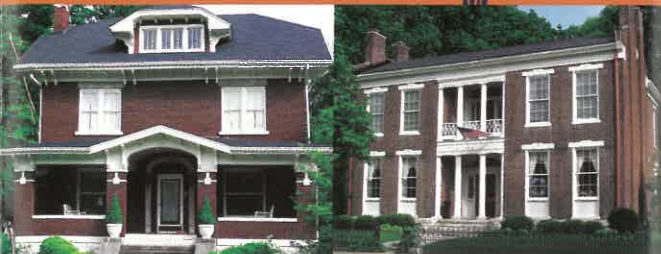
1425

1340



1326

1302



1246

1234



1220

1133

1425 STATE STREET **32** TOUR

SETTLE-THOMAS-WILLIAMSON HOUSE

1877 Italianate

This two-story brick house, built in 1875, is primarily Italianate with arched windows and deep bracketed eaves. The Eastlake door surrounds and the fluted Doric porch columns may be later additions. The house is believed to have been built by P. J. and Julia F. Potter and later sold to Shellie and W.E. Settle in 1885.

1356 STATE STREET **33** TOUR

CIRCA 1890 Folk Victorian

This lot was a gift for "love and affection" from Pleasant J. and Julia Hill Potter to one of their daughters circa 1886. The house was probably constructed shortly thereafter.

1348 STATE STREET **34** TOUR

WILLIAM J. POTTER HOUSE

CIRCA 1890 Folk Victorian

This lot was a gift for "love and affection" from Pleasant J. and Julia Hill Potter to their son William J. Potter in 1885. Features classical details including dentil moldings and brackets in the eaves.

1340 STATE STREET **35** TOUR

POTTER-COOMBS HOUSE

CIRCA 1890 Folk Victorian

This lot was a gift for "love and affection" from Pleasant J. and Julia Hill Potter to their daughter Pearl and her husband Dr. Samuel W. Coombs in 1888. This Victorian Cottage style house was built around 1892 by D. B. Dearing

1334 STATE STREET **36** TOUR

1938-39 Colonial Revival

This apartment house was built around 1938-39 by the partnership of Lampkin and Fitch. The two-story rectangular-plan four-plex with Colonial Revival influences was built of Warren County limestone and has changed little from the time of construction. It has a concrete porch across the entire front, balconies at the French windows upstairs, and gabled entry porches at the front and both sides.

1326 STATE STREET **37** TOUR

RICHARDSON-MURRY-BROWN HOUSE

1890 Eclectic

Judging from the steeply pitched front gable and the tall, narrow 2 over 2 windows, this 1890 house was probably Gothic Revival when it was built. A subsequent remodeling removed many of the Gothic details and replaced them with Classical details, including the Doric pilasters and dentils surrounding the front door and the double front porch.

1318 STATE STREET **38** TOUR

J. K. MCGINNIS HOUSE

1890 Greek Revival

The wide band of molding at the cornice, Doric Columns, and dentil cornice moldings on the porch are key features of this Greek Revival house.

1302 STATE STREET **39** TOUR

UNDERWOOD-MCELROY HOUSE

CIRCA 1860 Italianate

This early Italianate style two story home was considered high style during the period. It was built by Henry L. Underwood in the 1860s. The house was later purchased by the Honorable C. U. McElroy. Constructed of wood, hand carved to resemble stone, the finished home was meant to look like it would last a very long time. It is one of the few houses on the block that retains its original cast iron and stone fence.

Notice the bracketed eaves, broken pediments and arched windows. Converted into apartments in the 1940s, the house maintains its original configuration with an interior parlor which has been restored to the period it was built.

1246 STATE STREET **40** TOUR

ROEMER-BYAR HOUSE

1923 Craftsman

Built in 1923, this house is an excellent example of a newer home blending into an established neighborhood by borrowing stylistic elements. The bracketed eaves are from the Italianate, yet the rhythm created by the varying sizes of the brackets is more modern. Before this house was built, a spring-house for 1234 State Street was located on this property.

1234 STATE STREET **41** TOUR

JOHN CLARK HOUSE "BOXWOOD"

1843 Federal

Named for the large number of boxwoods planted on the grounds, this brick two-story house was built with Kentucky clay bricks in 1843 for the Clark family, a maker of fine furniture. A date stone can be seen between the double chimneys. The main doorway is not original to this house and was taken in the 1930s from St. Columba Academy located on Center Street. The Ell wing in the back of house was originally wood frame construction and contained the only stairway in the house. The wing was rebuilt in brick to match the main structure and a new stairway was built in the front hall of the house. The front yard is enclosed by wrought iron fencing from New Orleans. The property was sold to Pleasant J. Potter who lived here with his family before building and occupying "The Castle" at 1310 College Street.

1220 STATE STREET **42** TOUR

WALTER P. GAINES HOUSE

1895 Greek Revival

Built by the architect Henry McGoodwin in 1895 for Walter P. Gaines, this house includes an off-center front door with leaded glass sidelights and transom flanked by Doric pilasters. A Palladian window on the side and some oval shaped windows are believed to be original to the house.

1218 STATE STREET **43** TOUR

JAMES DAVIS HINES HOUSE

1885 Folk Victorian

This cross-gabled house has tall narrow windows showing an Italianate influence.

1202 STATE STREET **44** TOUR

WESTMINSTER PRESBYTERIAN CHURCH (VICTORY BAPTIST CHURCH)

1912 Roman Revival

This Roman Revival church was built in 1912 and is cruciform in plan with a central dome. The exterior features Doric columns and pilasters and is built of Warren County limestone.

531 EAST 12TH AVENUE **45** TOUR

B. F. GARDNER HOUSE

CIRCA 1914 American Foursquare

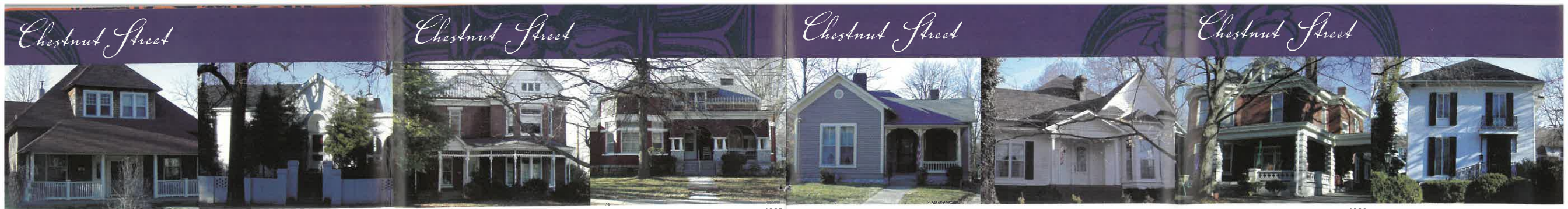
This is a brick veneer home with hipped dormer and broad porch.

1133 CHESTNUT STREET **46** TOUR

ST. JAMES APARTMENT HOUSE

CIRCA 1912 Eclectic

Built in 1912 by Adrian Humphries of Louisville for St. James Realty Company, the St. James Apartment House is the first apartment building to be constructed in Bowling Green. This structure is an excellent example of the post-Victorian reaction to applied



Chestnut Street

Chestnut Street

Chestnut Street

Chestnut Street



1265



1303



1323



1349



1340



1310

ornamentation. Simple decorative features are derived from the triple-tiered porches, stone beltcourse, door details, and deep eaves supported by decorative brackets. Stylized brickwork appears throughout the façade.

1137 CHESTNUT STREET **47**
TOUR

1922 Craftsman
Built in the 1920s, this house features a low pitched roof, hipped, wide overhanging eaves, and sleeping porches on both stories.

1217 CHESTNUT STREET **48**
TOUR

THEO PATTERSON HOUSE
CIRCA 1890 Italianate
Pedimented window surrounds, bracketed eaves and spindlework porch accent this traditional T-plan house.

1265 CHESTNUT STREET **49**
TOUR

W. W. MANSFIELD HOUSE
1895 Eclectic
Built in 1895 and designed by Henry McGoodwin, this house represents a very early example of a bungalow style. Notice the oval windows and exposed rafters in the eaves.

530 EAST 13TH AVENUE **50**
TOUR

C. G. SMALLHOUSE HOUSE
CIRCA 1890 Italianate
Features include arched windows, broken pediment and bracketed eaves. The porch facing Chestnut Street was obviously enclosed and moved to the 13th Avenue side. This house was formerly addressed as 1267 Chestnut Street when 13th Avenue was called Bond Street. This and the lot next to it were owned by Mr. and Mrs. C. G. Smallhouse and conveyed to his daughter Clara who built this house with her husband W. W.

Mansfield. The Smallhouses then received back this property so that the Mansfields could build the house at 1265 Chestnut. This house was sold to Levi L. Bacon after the turn of the century. A large area across Chestnut Street was also owned by Smallhouse and was called the "Smallhouse Lawn" when it was sub-divided sometime around 1904 into twenty-two lots. There are six lots each along Chestnut and Park (formerly Mulberry) Streets and twelve on the new 600 block of 13th Avenue.

526 EAST 13TH AVENUE **51**
TOUR

CIRCA 1920 Bungalow
Notice the shingles, knee braces supporting eaves on gable ends, and paired widows flanking the fireplace.

522 EAST 13TH AVENUE **52**
TOUR

1905 American Foursquare
Features include limestone window and door lintels and Doric porch columns.

1303 CHESTNUT STREET **53**
TOUR

PRESTON-RODES HOUSE
CIRCA 1873 Queen Anne
Notice the fish-scale shingles in pediments, fan motif corner brackets, spindlework porch and Eastlake door surround. This property was purchased by John. B. Preston from Isaac D. McGoodwin and then sold to Judge Robert Rodes.

1323 CHESTNUT STREET **54**
TOUR

W. T. DUBOSE HOUSE
1875 Eclectic
Richardsonian elements of this house include the Romanesque arch in the porch which is echoed by the Palladian window behind it. Queen Anne Shingle style elements include the shingles on the second story and the truncated tower in the front.

1349 CHESTNUT STREET **55**
TOUR

C. A. MUNKLE HOUSE
1905 Folk Victorian
This house was built by C.A. Munkle after purchasing the property from Dr. E. T. Barr and features a well-maintained spindlework porch.

1353 CHESTNUT STREET **56**
TOUR

LIDA CALVERT OBENCHAIN HOUSE
1905 Colonial Revival
This Dutch Colonial Revival house features a gambrel roof and oval windows. Classical Revival porch is probably a later addition. William A. Obenchain was the President of Ogden College which was originally located across 14th Avenue from this house. This property was sold to Obenchain by Dr. E. T. Barr, but the house was paid for by Obenchain's wife who was the creator of "Aunt Jane of Kentucky."

1352 CHESTNUT STREET **57**
TOUR

W. C. SUMPTER HOUSE
1924 American Foursquare
Features include deep eaves, broad porch, and hipped roof typical of American Foursquare. This house replaced a one-story frame house that was originally located somewhat closer to 14th Avenue and numbered 1350 Chestnut. Mrs. Sumpter was a local historian of some note.

1340 CHESTNUT STREET **58**
TOUR

IRA A. ELLIS HOUSE
CIRCA 1900 Queen Anne
Notice the corbelled chimney, fishscale shingles on second story, and Eastlake details.

1332 CHESTNUT STREET **59**
TOUR

ROBERT UNDERWOOD HOUSE
CIRCA 1880 Eclectic

This solid brick house features arched windows, bracketed eaves, and unique Romanesque third floor dormer. Designed as his personal residence, the architect, Robert Underwood, built the eclectic-style Victorian home at 1332 Chestnut Street in the late 1880s for a rumored \$5,000. The two-story brick structure, with a large room on the third floor, features a porte-cochere, Warren County limestone pillars with a cross-design on the porch balustrade, and bay windows on two floors. The house's numerous windows may well be a reaction to his father Senator Joseph Underwood's refusal to allow more than two windows on the front of Ironwood, the family home on the Barren River. Underwood sold the house and lot to Judge John Rodes who added a pergola, stable, carriage house, and tennis court and converted the summer kitchen into a cottage.

1328 CHESTNUT STREET **60**
TOUR

E. P. HARRIS HOUSE
CIRCA 1919 Colonial Revival

This Dutch Colonial Revival house features a gambrel roof and fan window on the third floor. This house sits on property originally owned by Isaac D. McGoodwin who had a large house (1316 Chestnut) situated more to the left and back from this one. McGoodwin sold the entire lot covering 221 feet of Chestnut Street to E. P. Harris in 1919. The house was probably built shortly thereafter.

1310 CHESTNUT STREET **61**
TOUR

A. J. ROOKER HOUSE
CIRCA 1913 Eclectic

The massing of the house suggests a Prairie Cube with Italianate windows and eaves.



1302

1262



620

636



1244

1320



647

134

1308 CHESTNUT STREET **62**
TOUR

ROLAND FITCH HOUSE

CIRCA 1910 American Foursquare

Features include a broad porch, use of stone on first floor, flared floor line on second floor, and deep eaves.

1302 CHESTNUT STREET **63**
TOUR

JOSEPH M. FARNSWORTH HOUSE

1905-1908 Queen Anne

Built between 1905 and 1908 by local builder Charles H. Smith, this Queen Anne style home has a leaded glass entryway imported from Italy, a wrap-around porch with paired Ionic columns, and a hand operated elevator (purchased from the Woolworth's 5 & 10 in 1939) on the back porch. Note the Palladian window over front door and pressed tin in the third floor gables. Joseph M. Farnsworth was a druggist with an office at 101 Main Street.

1262 CHESTNUT STREET **64**
TOUR

HUBERT D. GRAHAM HOUSE

1906-1907 Eclectic

Completed in 1907, the Hubert D. Graham house was the first home in Bowling Green constructed entirely of cast ornamental concrete block. A marking block can be seen on the second floor at the northwest corner. Construction was completed just before the mainstream popularity of concrete block construction. During the early 20th century, Sears, Roebuck, and Company began selling significant numbers of block machines, making this material available to many Americans for the first time. This house was also one of the first wired for electricity at the time of construction. Dentil molding, wrap-around porch and varied pitched roof are typical of the Queen Anne Free Classic style. Leaded glass on the upper sash of the windows is typical of the Prairie style. A sleeping porch was added in the early 1920s and was apparently enclosed in the 1950s. A detail map of the Graham house from 1914 shows behind the home sat a "hot house" with a glass roof.

620 EAST 13TH AVENUE **65**
TOUR

HAWKINS HOUSE

1937 Colonial Revival

Built by Byrd Carpenter, this Colonial Revival style home stands at the former location of a "hot house" owned by the Graham family of 1262 Chestnut Street. Both this lot and the Graham House were sold at auction in the early 1930s.

632 EAST 13TH AVENUE **66**
TOUR

J. A. WALLACE HOUSE

1912 Bungalow

This lot of "Smallhouse Lawn" was initially sold to Stella Smallhouse in 1906 and changed hands several times before it was purchased by J. A. Wallace. This is a brick veneer bungalow built by the Wallace family.

636 EAST 13TH AVENUE **67**
TOUR

C. B. SMITH HOUSE

CIRCA 1914 Eclectic

This lot of "Smallhouse Lawn" was initially sold to W. S. Ashby and J. L. Bennett in 1906. It then was sold to C. H. Bailey in 1909 and then to C.B. Smith in 1910. This house was most likely built for C.B. Smith. It has deep eaves and fine leaded glass windows.

642 EAST 13TH AVENUE **68**
TOUR

NELL BENNETT ALVIS HOUSE

1909 Eclectic

This lot of "Smallhouse Lawn" was initially sold to W. S. Ashby and J. L. Bennett in 1906. Features include fish-scale shingles in side gables, arched windows, and Greek Revival porch with Doric columns and dentil moldings.

1234 PARK STREET **69**
TOUR

1905 Folk Victorian

This cross-gable plan house features fan motif corner brackets, fishscale shingles in the pediments, and Eastlake door surround.

1244 PARK STREET **70**
TOUR

CHARLES DRAKE HOUSE "NINE HEARTH'S"

1890 Folk Victorian

Built in 1890 by Thomas J. Sweeny and Charles W. Potter. It is called "Nine Hearths" because of the large number of hearths found in the home until renovations in the late 20th century. It is a fine example of "speculative frame dwelling."

1250 PARK STREET **71**
TOUR

DICKERSON HOUSE

1890 Folk Victorian

Built in 1890 by local developers Thomas Jefferson Sweeney and Charles W. Potter. The one-story T-plan house was considered an ornamented working class residence when it was built.

1320 PARK STREET **72**
TOUR

JOHN H. GRIDER HOUSE

1851 Greek Revival

This Greek Revival house was built in 1851 on a farm extending from 12th Avenue and Chestnut Street to Smallhouse "Pike" by John Hobson Grider. As a Union colonel, Grider served in the Kentucky 52nd and 19th Volunteers. As the Confederate Provisional Governor of Kentucky, George W. Johnson lodged here. This was also probably the site of the Confederate Legislature. Grider Hill was heavily fortified with at least three cannons and was manned. The home has since always been a single-family residence. The structure was built of five bay brick with Flemish bond and double partially exposed exterior end chimneys. The portico and columns were added around 1910. It may have had the same designer and builder as 1234 State Street.

1332 PARK STREET **73**
TOUR

JOHN B. GRIDER (JUDGE) HOUSE

1884 Folk Victorian

Although lacking in spindlework or gingerbread details, this one-story frame house is otherwise typical of the Folk Victorian style. Features include a front facing gable and full length porch.

1350 PARK STREET **74**
TOUR

1880 Eclectic

Features include steep roofline, delicate turned porch support columns, and Gothic decorative truss at roof and dormer apex.

651 EAST 14TH AVENUE **75**
TOUR

FLOYD ROTRAMEL HOUSE

CIRCA 1922 Bungalow

This bungalow features tapered porch supports and knee braces supporting eaves.

647 EAST 14TH AVENUE **76**
TOUR

ERNEST FLOYD COLBOCH HOUSE

CIRCA 1924 Bungalow

The Colboch House is a 1.5 story frame, cross-gabled bungalow. Built in 1924, the house is a contemporary of other bungalow houses on 14th Avenue. This block had formerly been part of the H. L. Underwood Homeplace, which was subdivided after the death of Mr. Underwood in 1908.

652 EAST 14TH AVENUE **77**
TOUR

1925 Colonial Revival

Notice the original broad clapboards.

1359 PARK STREET **78**
TOUR

1915 American Foursquare

Features a broad porch with stone supports.

1347 PARK STREET **79**
TOUR

JOHN R. DRAKE HOUSE

1905 Colonial Revival

This house sits on portions of four parcels of land acquired by John R. Drake between 1894 and 1908 which extended 102 ft. along Park Street. It is of brick construction with a limestone foundation.

627 EAST 13TH STREET **80**
TOUR

ROY G. COOKSEY HOUSE

CIRCA 1919 Bungalow

A fine example of a brick veneer Bungalow.